

TempTrust™, by Infitrak, is the only qualified packaging solution based on 10+ years of temperature profile data

The TempTrust Advantage

Specialized solutions that not only conform to industry-specific regulatory requirements, but also use specialized temperature profile data to assure performance and quality:

- Use less refrigerant
- Reduce container weight
- Optimize gel pack conditioning
- Minimize pack-out failures
- Durable and recyclable
- Fast time-to-market

Developed & qualified to surpass key regulatory standards



Surpass industry standards and fast track your packaging qualification

Typical regulatory standards are adequate for setting a baseline package design. However, repeated studies show that without applying the knowledge of climatic conditions in the areas which products are shipped and stored, companies are missing a crucial element to designing qualification of packaging methods.

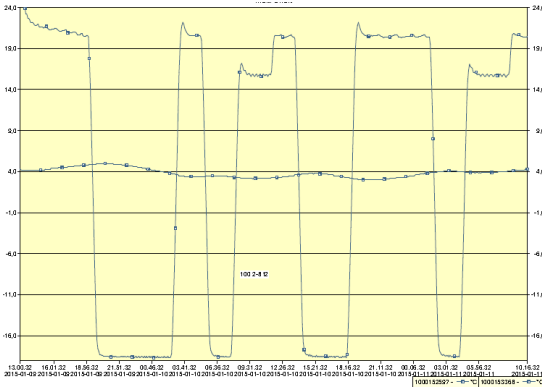


Infitrak has analyzed standard transportation modes in North America for over 10 years and documented thousands of data points, across all major origins and destinations. This expertise enables the company to offer a solution that exceeds all industry standards, reduces failures and cuts total-cost-of-ownership for shipping products.

- ☑ **Fast-track your qualification** — Cut time-to-market by several months through proven data models from thousands of lane profiling and shipping studies.
- ☑ **Developed around key requirements** — From regulatory compliance to seasonal, transportation processes, and locations to types of insulating material, TempTrust utilizes it all to create your customized solutions.
- ☑ **Optimization: more than just a word** — Determine the right quantity of refrigerant, reduce container weights, optimize gel pack conditioning, & reduce pack-out failures.
- ☑ **Durability and recyclability** — We are so sure of the quality that we encourage product reconditioning for reuse that gives you the ability to reduce your cost-per-shipment to that of a single-use container.
- ☑ **Scalability to meet your needs** — Available in multiple sizes & configurations, as a fully qualified solution or separate components (EPS, corrugate, PCMs).
- ☑ **All reports included** — Every solution includes Qualification Reports (IQ and OQ). Seasonal Performance Qualifications available with minimum quantities.



TempTrust 48 Hour Qualified Packaging System



Surpasses regulatory standards and reduces total cost-of-ownership

Every packaging solution is fully qualified against specific temperature profiles that take into account your transportation processes and geographical region.

The sample data set on the left demonstrates a qualification study for a 48 hour payload shipping system under a controlled temperature (2°C to 8°C) during the cold weather season.

Multiple sizes, seasons and pack-out options

The TempTrust 48 hour packaging system is a single use system available in three temperature performance ranges: 2°C to 8°C, 2°C to 25°C and 15°C to 25°C with custom profiles available for volume orders. Packaging is available as a complete solution (Corrugate, EPS, PCM, and vacuum panels) or can be ordered separately as components.

Model #	Ideal Applications	External Dimensions (inches)	Internal Dimensions (inches)	Payload Size (inches)	EPS Wall Thickness (inches)	Seasonal Pack Outs Available	Boxes per Pallet
147	Small, overnight shipments	10.5 x 8.25 x 8.5	7.75 x 5.5 x 5.75	7.5 x 5.25 x 2.75	1.375	Summer & Winter	192
92	Small shipments	13.25 x 11.5 x 11.5	8.75 x 6.75 x 7	6.62 x 6.25 x 3.75 or 6 x 4 x 4*	2.25	Summer, Spring/ Fall & Winter	96
50	Small shipments	15 x 11.5 x 11.75	11 x 7.5 x 7.75	8.5 x 7.5 x 4.25 or 9 x 5 x 6*	2	Summer, Spring/ Fall & Winter	96
100	Medium shipments	18.12 x 13.5 x 14	14.5 x 9.6 x 11.4	13.5 x 10.25 x 6.25	1.81	Summer, Spring/ Fall & Winter	80
71	Large shipments	13.75 x 13.75 x 12	10.25 x 10.25 x 9	10 x 7.5 x 5.5	1.5	Summer, Spring/ Fall & Winter	96
135	Large shipments	22.13 x 16.9 x 20	16.6 x 11.38 x 15	14 x 9 x 12 or 16 x 11 x 10*	2.5	Summer, Spring/ Fall & Winter	20
132	Large shipments	28.31 x 20.5 x 13.5	25 x 17.5 x 10.5	24 x 17 x 7	1.5	Summer, Spring/ Fall & Winter	28
73	Large shipments	26.37 x 20.5 x 20.25	22 x 15 x 15.68	22 x 14.5 x 10.5	2	Summer, Spring/ Fall & Winter	12

*Payload based on PCM configuration

**All models available in additional durations

TempTrust was developed by Infitrak. Trusted leader in cold chain management

Since 2002 Infitrak has designed and developed comprehensive cold-chain solutions that protect a product's integrity and ensures patient and consumer safety. Infitrak is the only company with all three areas of compliance-based, temperature controlled services and products: packaging, consulting, and real-time monitoring, This translates into a team that is with you all the way from raw materials to end user. For more information, visit us at www.infitrak.com.